

2010 "Spaces" Farmhouse Vouges Redux, Wennigsen Germany

>6<

>7<



>INDEX

Introduction	9	Jam	232
Farm House Voges Redux	12	Homage to a Film Maker	240
Tower House	24	X-Loft	250
The Old Granary	36	JM Zaragoza Apartment	258
House in El Bages	48	Graph	268
DM35 House	60	Appartment in Americo Vespuccio Avenue	274
CL53 House	70	Aluminum House	284
Kazovsky Renovation	78	Private House in Florence	294
Stonehedge Residence	86	House in Porta da Pena	298
House in Saint Henry	92	J-Loft	304
Connor Residence	102	Residential Containers	314
Marco Polo Apartment	110	L Residence	320
Gianicolo House	118	Chelsea Duplex Penthouse	330
Surfside	128	Losa Loft	340
Solar Box	140	Chihuahua 78 Houses	346
Hawthorn House	148	San Matías Houses	354
Refurbishment of a Listed House in Kaimakli	156	Conjunto 2GB	362
Village House	166	The House of Colors	370
Residence 1414	176	92 Warren House	378
House De Belder-Robjins	186	13 de septiembre Houses	386
Genevra	196	Barrio Las Flores Single Family House	394
Open Box 2	204	P.NT2 House	404
Buckley House	212	Directory	416
Kelso House	222		

> Wennigsen, Germany | 2008 | Duration of project: 15 months | 4,477 sq ft | © Olaf Baumann <

Despang Architekten

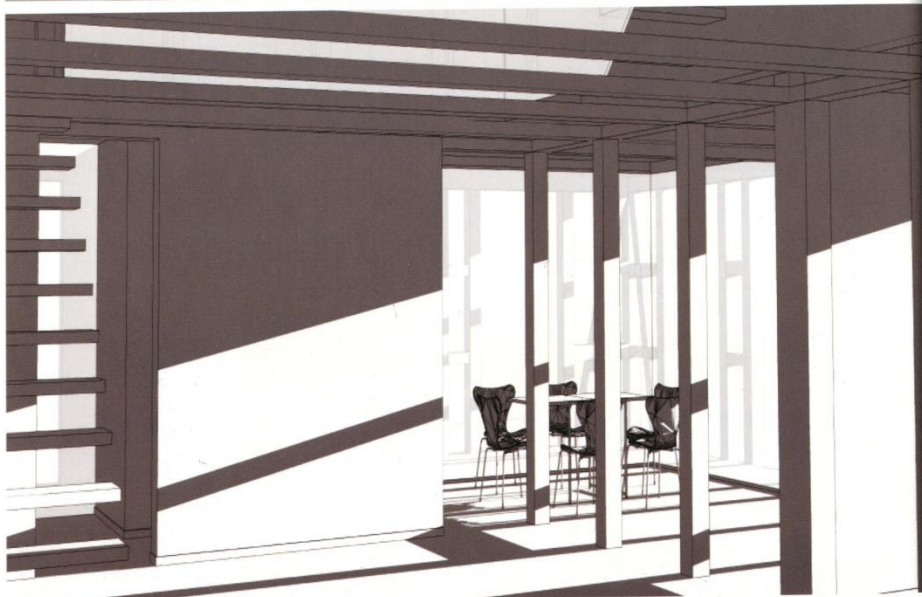
This project came about as the result of research conducted by the architects' studio into ways to improve the most traditional type of north German housing, which characteristically has a timber structure. This material is used sparingly, and the gaps between the timbers are filled with a conglomerate of various materials including earth, mud and reeds.

The main requirements in the renovation brief of this two-story building were, firstly, to create a more open façade to enhance daylighting and, secondly, to supply an alternative means of energy. The living space on the ground floor, in the center of the building, is small and consists of a thermal zone that is separated from the outer structure by means of a triple-layered glazed wall that allows daylighting to enter.





Opening the ground floor to the exterior did not alter the typical features of a north German home. The timber superstructure was conserved, and a porch was created between this and the new thermal glazed space. This porch serves to protect inhabitants from the elements.



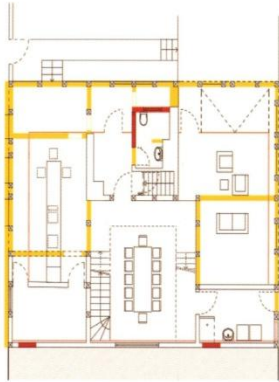
Light studies



The architects decided against opening the second level up to the exterior, since the more private living spaces are located on this level. This decision therefore created an architectural hierarchy whereby the common spaces are located on the lower level and the private spaces on the level above.



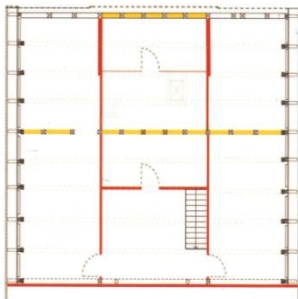




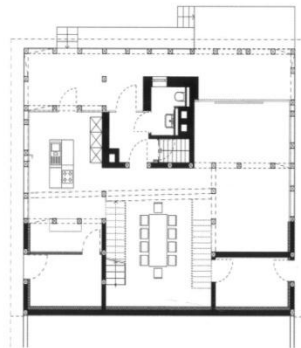
Existing ground floor plan



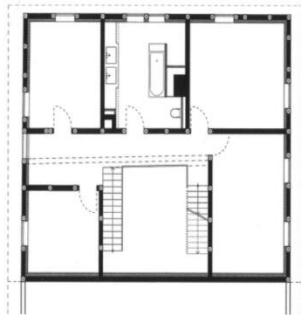
Existing second floor plan



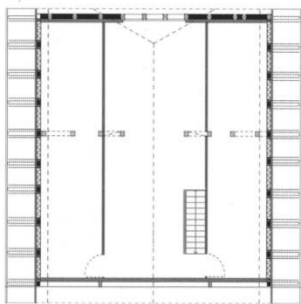
Existing third floor plan



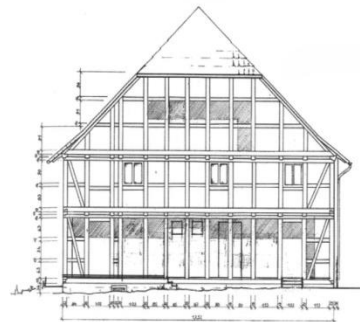
New ground floor plan



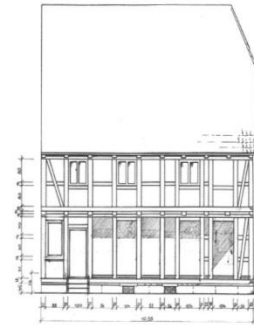
New second floor plan



New third floor plan



North elevation



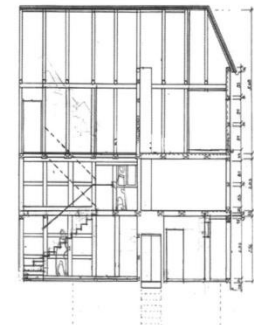
East elevation



West elevation



Section 1



Section 2